

GET THE FACTS ON *Electrical Repairs*

	Unitil's responsibility
	Customer's responsibility

Every homeowner should know who is responsible for electric repairs around the house. Sometimes it is the utility company, but other times it is you, the customer. The guide below shows you when to call an electrician, and when to call Unitil. This information will serve you well in case of storm damage.

SERVICE LINE:

The wire that runs from the pole to the house is Unitil's responsibility.

WEATHERHEAD:

This attaches to the service entrance and prevents water damage to the wiring. It's installed by an electrician, but is the customer's responsibility.

SERVICE ENTRANCE CABLE:

Runs from the weatherhead down the side of the house to the meter base. It is installed by an electrician, but is the customer's responsibility.

METER:

It is installed and maintained by Unitil.

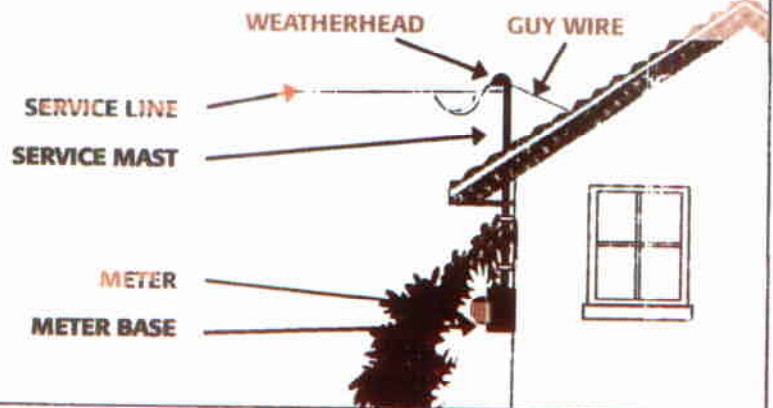
WIRING & ELECTRICAL PANEL:

These are inside the house. They are installed by an electrician, and are the customer's responsibility.

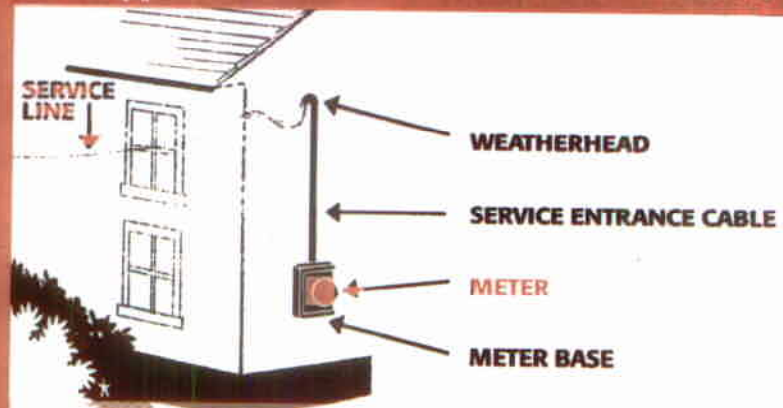
UNDERGROUND CONDUIT & SERVICE CABLE:

If electrical service is provided through an underground conduit and service cable, the conduit is installed by an electrician; the cable is installed by Unitil. Both are Unitil's responsibility.

Overhead Service to Low Building



Typical Overhead Electrical Service



Underground Electric Service

